





Map One
City of Port Orford

May 2006

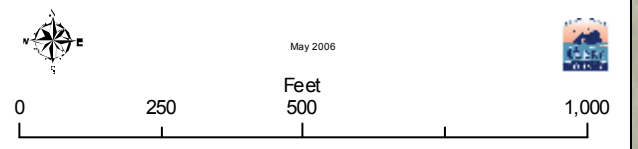
Miles
0 0.25 0.5 1





 

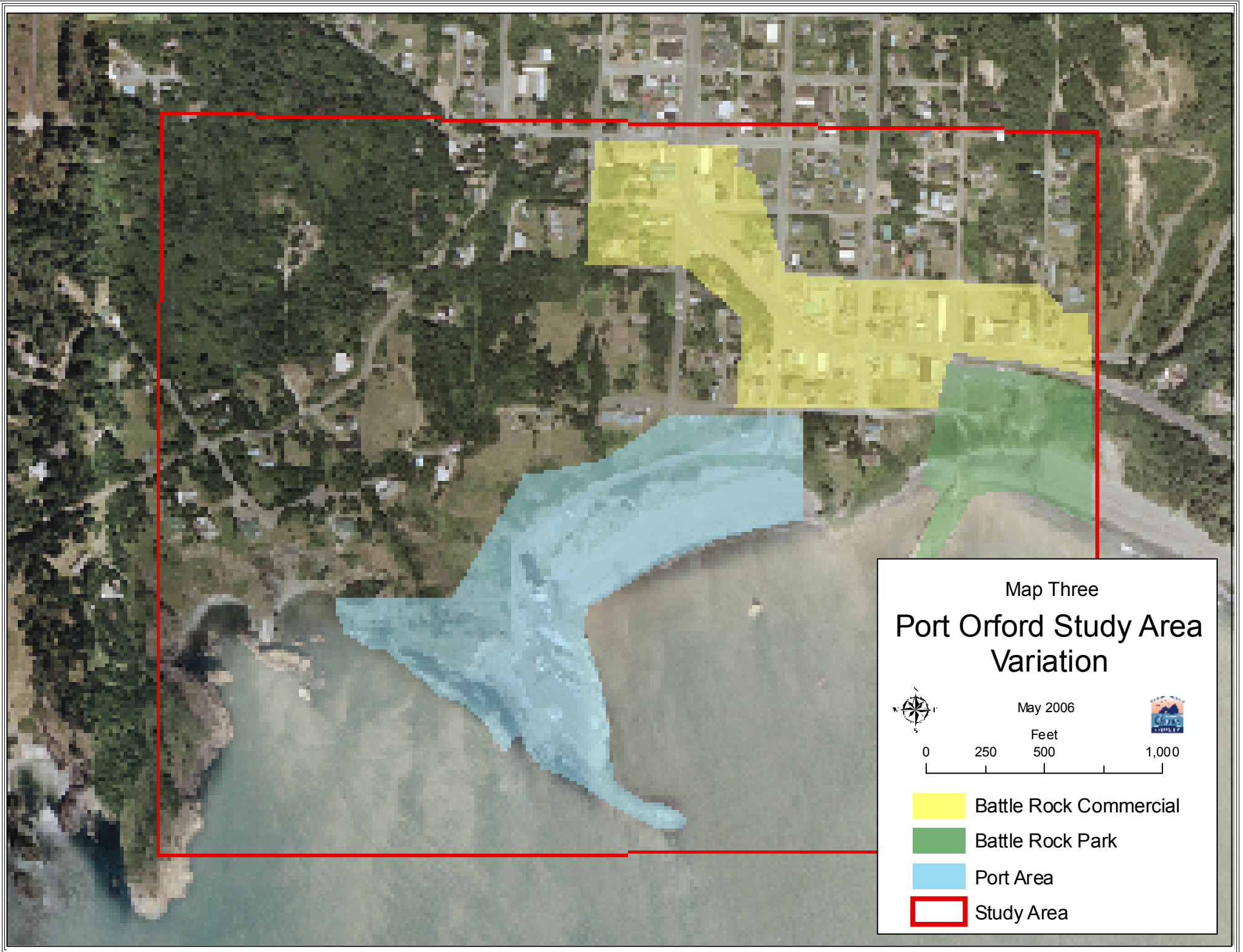
 City Limits
 Urban Growth Boundary

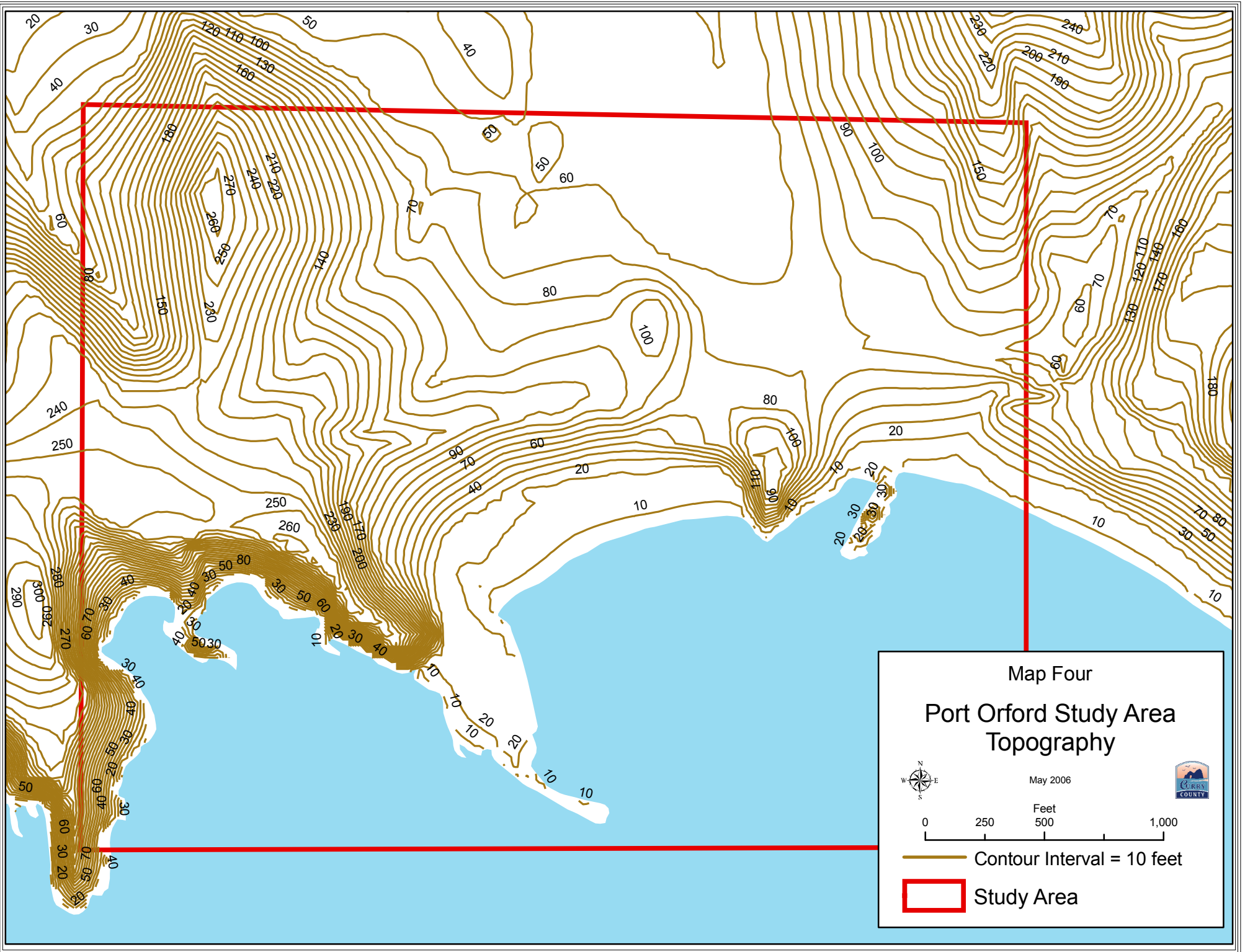


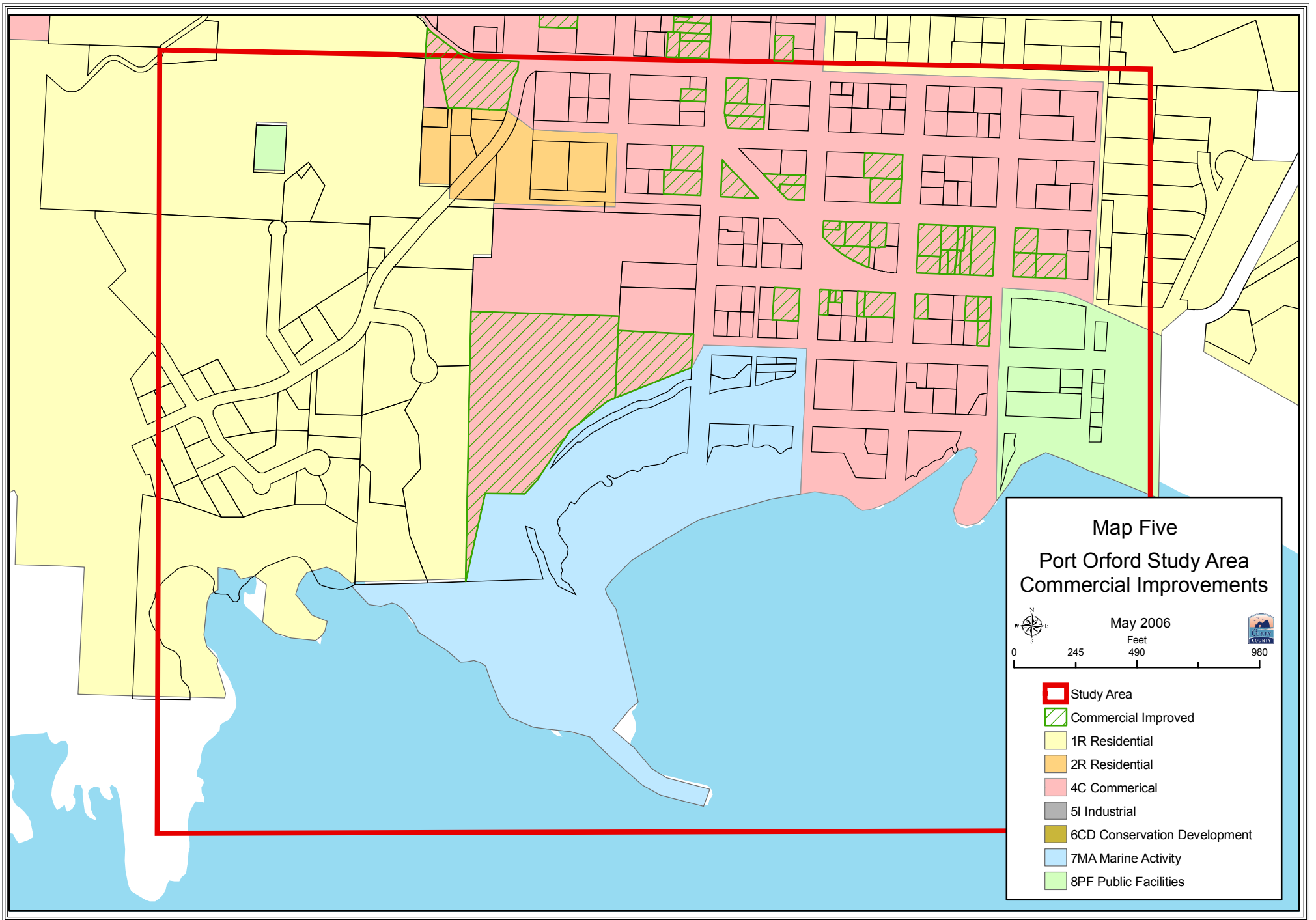
Map Two Port Orford Study Area



-  Study Area
- Interest Areas**
-  Battle Rock Shopping Area
-  Battle Rock Park
-  Port Area





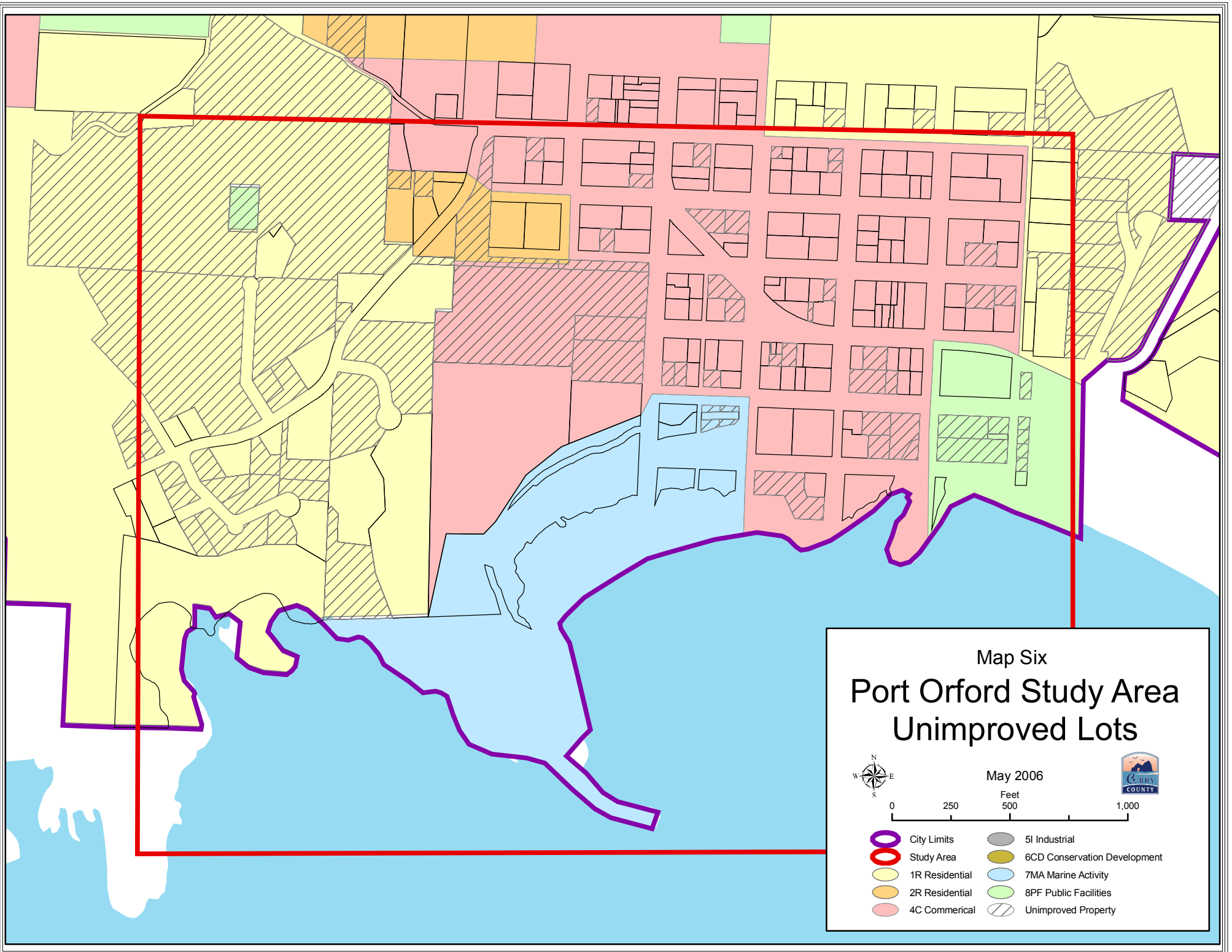


Map Five
Port Orford Study Area
Commercial Improvements

May 2006

Feet
 0 245 490 980

Study Area
 Commercial Improved
 1R Residential
 2R Residential
 4C Commercial
 5I Industrial
 6CD Conservation Development
 7MA Marine Activity
 8PF Public Facilities

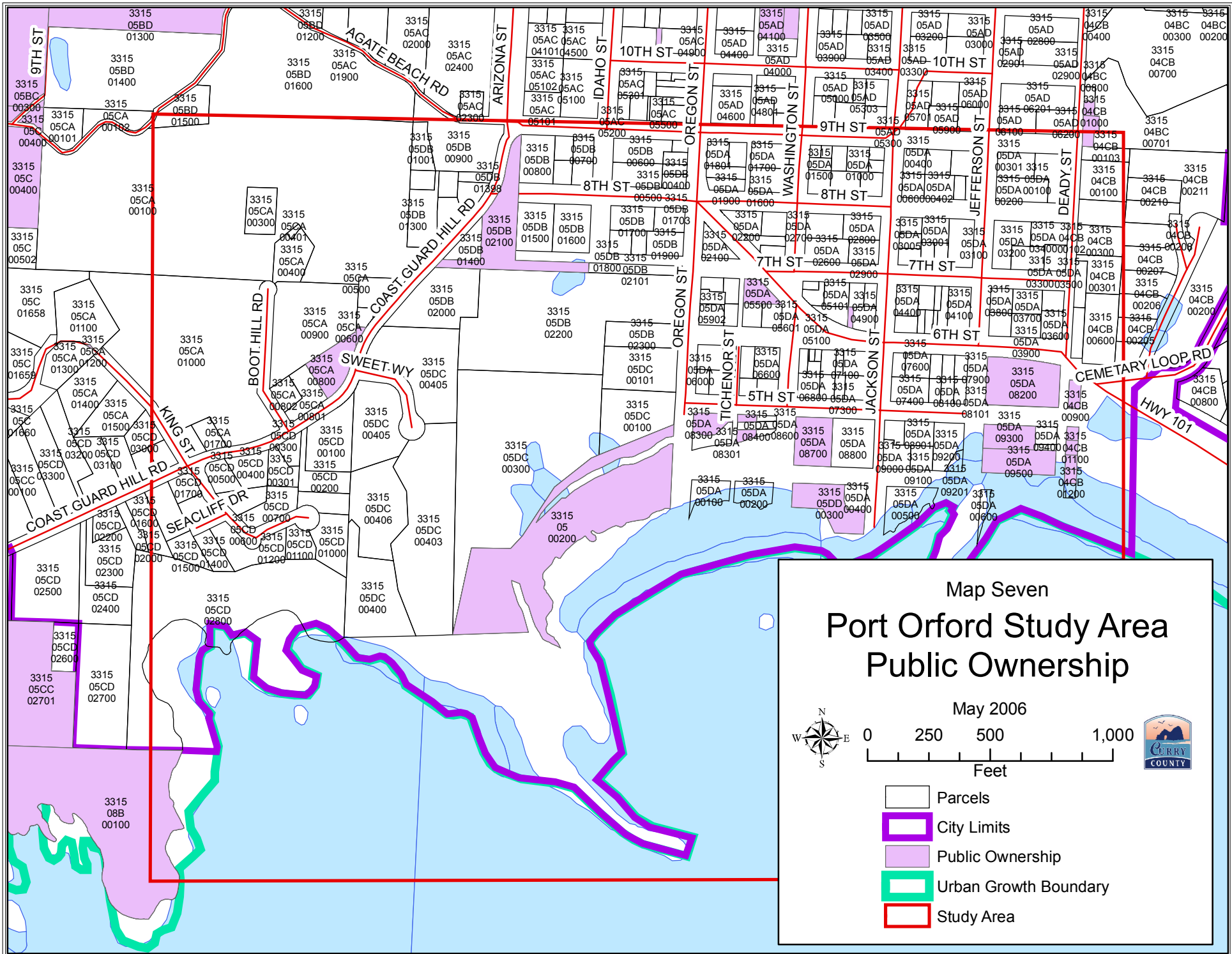


Map Six
 Port Orford Study Area
 Unimproved Lots

May 2006

0 250 500 1,000
 Feet

- City Limits
- Study Area
- 1R Residential
- 2R Residential
- 4C Commercial
- 5I Industrial
- 6CD Conservation Development
- 7MA Marine Activity
- 8PF Public Facilities
- Unimproved Property



Map Seven
Port Orford Study Area
Public Ownership

May 2006

- Parcels
- City Limits
- Public Ownership
- Urban Growth Boundary
- Study Area

